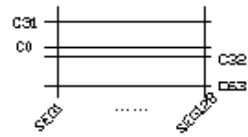
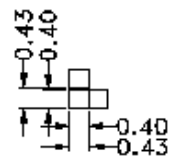


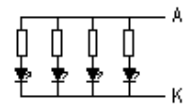
Terminal	
No.	Pin Name
1	3.3V
2	CS LCD
3	SDA
4	RS
5	SCLK
6	RST
7	CS_Font/NC
8	SO_Font/NC
9	ESD
10	GND
11	BLA
12	BLK



Panel Wiring Details
Scale=free



DOT DETAIL
SCALE 5:1



BL Circuit Diagram

*1. LCD Display Type	STN-BLUE, Transmissive, Negative		
*2. Viewing Direction	6H	*6. Storage Temp	-30°C~80°C
*3. LCD Driver Mode	1/64Duty, 1/9Bias	*7. Driver IC	ST7567
*4. Operating Voltage	3.3V	*8. Backlight	WHITE VF=3.0V IF=60mA
*5. Operating Temp	-20°C~70°C	*9. ROHS	

HOT DISPLAY

Dwg Title: HTM-COG12864N01A-SPI

EDC No: _____ Ver: A/0

Scale: 1:1 Unit: mm Tol: ±0.2

Drawn: _____ Checked: _____ Date: 2022-09-26